

C&G

Connecticut Cottages and Gardens

COTTAGESGARDENS.COM | APRIL 2019

HIGH-STYLE DESIGN,
TRAVEL + ENTERTAINING



WHAT'S NEW



Out of the Box

GEAR UP FOR SUMMER WITH GREAT IDEAS FOR OUTDOOR LIVING | BY MARY FITZGERALD



SEEING STRIPES

Woven from weather-friendly yarns, the Perennials Santorini rug from Serena & Lily stands up to stains, rain and moisture. Suitable for patios and porches in four sizes. \$898–\$3,798, *Westport*, serenaandlily.com.



WHAT'S NEW



PARTY TIME

Get the party started with True Residential's indoor/outdoor beverage center, constructed in True's 300-series steel. The unit can be customized according to specific needs with refrigeration and freezer drawers, an icemaker, a beverage dispenser and wine storage options. Build Your True Collection offers a choice of finishes, including matte black with brass hardware, shown here. *Prices vary according to configuration, available through Altora Appliance, Norwalk, altora.com, true-residential.com.*

THROWING SHADE

The Vogue Valery hexagon umbrella from Santa Barbara Umbrella sports contrasting colors in Tango Orange and Cadet Gray with a platinum powder-coated aluminum frame and base. *Price upon request, available through Walters, D&D, waltersnyc.com, santabarbaradesigns.com.*

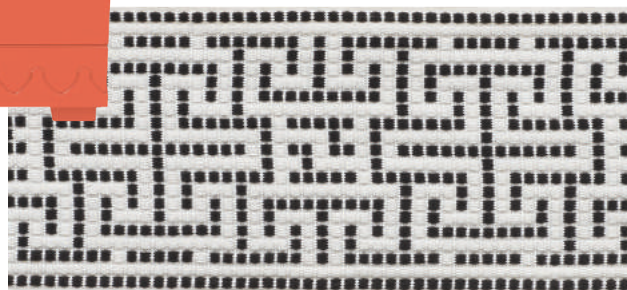


PLANTER'S PUNCH

For a pop of color, Oomph's Ocean Drive planter in Island Orange is the perfect accessory. The 21-inch square aluminum frame is lightweight, yet durable. *\$1,575, Greenwich, oomphhome.com.*

TRIM THE SAILS

Add custom details to outdoor upholstery with Schumacher's Maze trim tape, available in four colors. The chunky woven design is based on a classic Ionian key pattern. The 100-percent polyolefin material can be used for indoor or outdoor applications. *Price upon request, D&D, fschumacher.com.*



FLOS FINOS PIERO PASANOTTO



WHAT'S NEW

GETTING GRAPHIC

Lisbon Weave, shown here in Indigo, is part of the Isola collection by Scalmandré. Made of 100-percent polyester, this fabric is suitable for indoors or outdoors. *Price upon request, D&D, scalamandre.com.*

EVENING GLOW

Danish designer Christian Flindt created the Flindt wall-mounted fixture for Louis Poulsen. The circular design casts a warm aura of downward light and can be used indoors or out. *\$590, available through Design Within Reach, Stamford, dwr.com, louispoulsen.com.*

BOX SQUARED

The Flos Ipnos outdoor light is a modern take on the traditional lantern. LED lights line the top of the simple, sculptural frame designed by Nicoletta Rossi and Guido Bianchi. Available in black, bronze or natural. *\$945, available through Design Within Reach, Westport, dwr.com, usa.flos.com.*



FULLY LOADED

Bringing the pro-style kitchen outdoors, Thor's new modular kitchen suite includes a grill, a sink, refrigerator drawers, a pizza oven and storage cabinetry. *\$6,300, thorkitchen.com.*



WHAT'S NEW

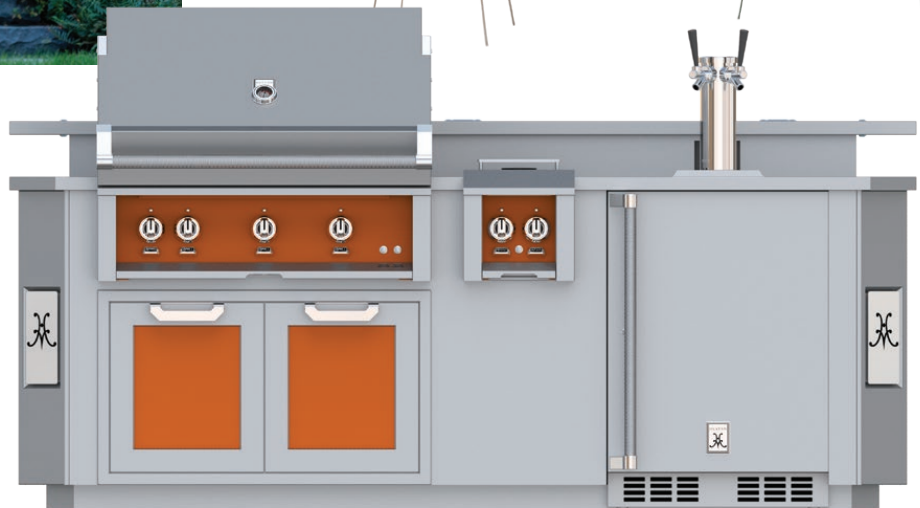


WELCOME HOME

Illuminate a path, garden or pool area with Hubbardton Forge's Loft post light in a contemporary, conical lantern shape. Seeded or opal glass cylinders glow within a geometric frame. Coordinating sconces, pendants and semi-flush options are available in six finishes made to resist harsh environmental conditions. \$1,025 (post sold separately), available at *Chloe Winston Lighting Design, Norwalk, chloewinstonlighting.com, hubbardtonforge.com.*

LIGHT THE NIGHT

Colorful fabric lampshades are fitted over a simple aluminum structure to create the Fila outdoor light, designed by Michel Charlot for Kettal. The fixture can be wired or fitted for batteries and is available in three sizes and seven color combinations. Price upon request, D&D, *kettal.com.*



SKY HIGH

Is it a bird house, a bird feeder or a garden folly? It is actually all three. Labeled Sky Stations by Redbird Studio, the handcrafted designs mimic traditional architecture. Prices range from \$1,350 to \$1,750, *redbirdstudio.design.*



LUXURY SUITE

Hestan's Outdoor Living Suite is offered in eight- or twelve-foot units, accommodating a built-in grill, double side burners, refrigeration and a drink dispenser. Shown here in Citra orange in heavy-gauge stainless steel. Price upon request, available through Aitoro Appliance, *aitoro.com, home.hestan.com.*



ROCK, FIRE, FABULOUS

Stonecutters from Stone Forest hand carve the Natural Boulder fire vessel with a hammer and chisel, adding individual character to each piece of granite. A gas kit with tempered glass, in blue or black, is sold separately. \$3,500, *stoneforest.com.*