



THE HB HOT LIST: CLEVER OVENS FOR COOL KITCHENS

AUSTRALIAN

# home beautiful

100 PAGES OF  
INSPIRING  
DREAM HOMES

## HAMPTONS jewel

DIVINE SUNLIT SPACES  
and a MASTERCLASS in  
EVERLASTING STYLE

barely  
BOHO  
The laid-back  
look gets a  
makeover

SEXY  
BATHROOM  
SURFACES

A beautiful  
Mother's Day  
brunch

## SPECIAL: DREAM HOMES

REAL-LIFE RENOVATIONS, EXPERT ADVICE & IDEAS TO STEAL  
EAST COAST CLASSIC | DESIGNER GEM | GREEN RETREAT | THE DOWNSIZER

DREAM  
HOME  
SPECIAL EDITION



EAST COAST CLASSIC

# GRAND OASIS

AN 1860S COTTAGE HELD BY A FAMILY FOR FIVE GENERATIONS FORMS THE SENTIMENTAL HEART OF THIS PALATIAL HAMPTONS-INSPIRED FARMHOUSE

Words KYLIE JACKES Styling FIONA GOULD Photography CATH MUSCAT



**LIVING ROOM** Homeowners Natalee (pictured opposite) and husband Mark had long fantasised about buying the cottage that his great-grandfather built. When the dream was realised two years ago, a grand plan to renovate the decrepit little house was put into action. Natalee's Hamptons-inspired vision is reflected in every element of the build and in the exquisite finer details. In the main living area (below), a soaring eight-metre-high ceiling and wall of French doors and transom windows, by Jason Windows, floods the room with natural light. The crowning glory is a one-metre-wide chandelier from One World, which hangs majestically over the lavish space. Prior to the floor plans being drawn up, Natalee - the founder of interior design brand Indah Island - had chosen and positioned almost all of the furniture. "I always visualise how I want spaces to look and the furniture I want, then design the size of the room accordingly," she says. Key pieces include sofas from Molmic, a timber coffee table from Abide Interiors, rattan pieces available through Indah Island and a sea of blue and white custom cushions from Tigger Hall Design and Westbury Textiles. >



Natalee and Mark's home is well off the beaten track. Set on sprawling farmland in the Western Australian Wheatbelt, it's a good hour-long drive from Perth and 20 minutes from the nearest country town, yet as you meander up their dusty driveway, this stately manor is impossible to miss. "It's not your average farmhouse, it's more like a beacon, particularly at night when it's lit up - you can spot it two to three kilometres away," says Natalee.

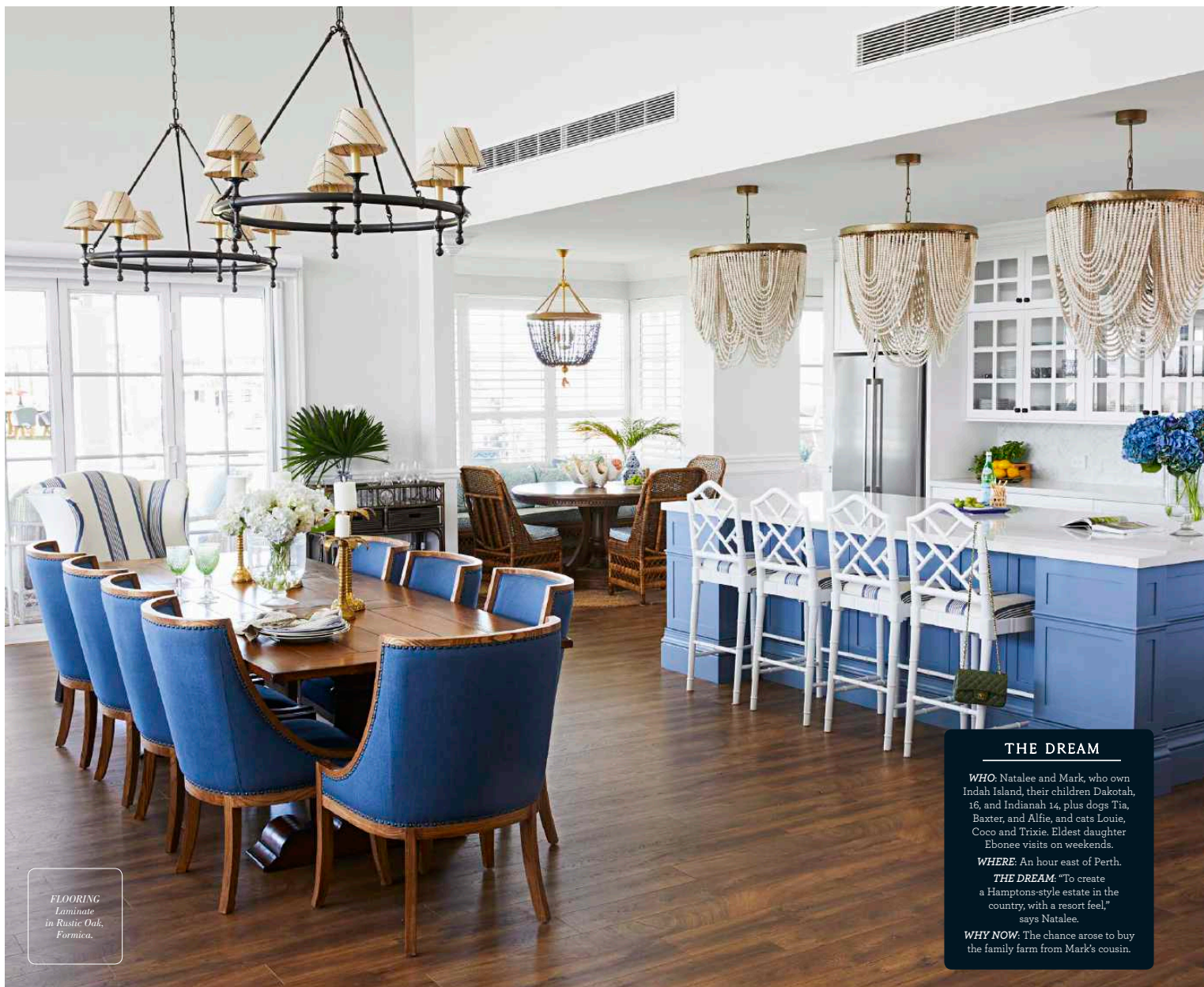
For the couple and their children Dakotah, 16 and Indianah, 14, rural life is still something of a novelty, after the opportunity arose to buy a 78-acre farm from Mark's cousin and build a forever home. "The land has been in Mark's family for five generations and his great-grandfather built the original brick cottage on the site in the 1860s, so it holds a lot of history," says Natalee. "Mark's dad was born in the cottage, relatives have got married there and even though it had become quite derelict over time and should have really been bulldozed, we really wanted to preserve the family's heritage." For the designer, whose company, Indah Island, is renowned for its bespoke Hamptons-style projects, the cottage and its vast landscape provided an irresistible opportunity to create something of grand proportions that's unique, yet also personal. "True American Hamptons homes are quite extraordinary in scale and I really wanted to emulate that," she explains.

The design took shape around the original cottage with adjoining north and south wings built on either side. Inside, the bedrooms and bathrooms for Indianah, Dakota and eldest daughter Ebonee, who visits on weekends, were created within the cottage's cosy footprint, while the generous extension allowed for a modern open-plan layout, with numerous living areas as well as a luxurious parents' retreat, mezzanine level and a self-contained studio.

Surprisingly for such a large project, the build was completed in just 11 months, for which Natalee credits a dedicated team of tradies who worked to a tight schedule. A highlight since moving in last year was hosting Christmas. "We had 25 people for lunch and 18 stayed until New Year, which was a lot of fun," says Natalee. "I love having a house full of people and, because of the size, it does feel like a comfortable resort with plenty of space for everyone to spread out and do their own thing." Large Christmas gatherings now seem likely to become a tradition, in a home that is well-loved by a huge extended family. "Everyone's incredibly appreciative we kept the cottage and because it's come through the generations, the house will always stay in the family," she says. After 160 years and a sizeable extension, it's enjoyed more than ever and is now ready for its next chapter.

**"IT WAS JUST FANTASTIC  
TO BE ABLE TO RUN  
WILD AND *do anything*  
I WANTED TO WITH  
THE DESIGN" ~ NATALEE**

**KITCHEN & DINING** Keen to create something different rather than "cookie cutter", the couple's starting point for the kitchen design was a trio of bespoke timber-beaded chandeliers, available through Indah Island, which form a dramatic focal point above the three-metre island bench. Choosing the perfect shade of blue for all the elaborate custom under-bench joinery was also critical - Natalee deliberated for several months before choosing Saxby Blue. "Because the space is connected to several eating areas and the main living area, it needed to be just right so it worked with all the surrounding blues and greens," she explains. A splurge throughout was Ralph Lauren fabrics - used to upholster bar stools from Abide Interiors, dining chairs from Home Styling Warehouse and the lampshades of a pair of chandeliers from The Montauk Lighting Co, which command attention above the dining table. >



FLOORING  
Laminate  
in Rustic Oak,  
Formica.

#### THE DREAM

**WHO:** Natalee and Mark, who own Indah Island, their children Dakotah, 16, and Indianah 14, plus dogs Tia, Baxter, and Alfie, and cats Louie, Coco and Trixie. Eldest daughter Ebonee visits on weekends.

**WHERE:** An hour east of Perth.

**THE DREAM:** "To create a Hamptons-style estate in the country, with a resort feel," says Natalee.

**WHY NOW:** The chance arose to buy the family farm from Mark's cousin.



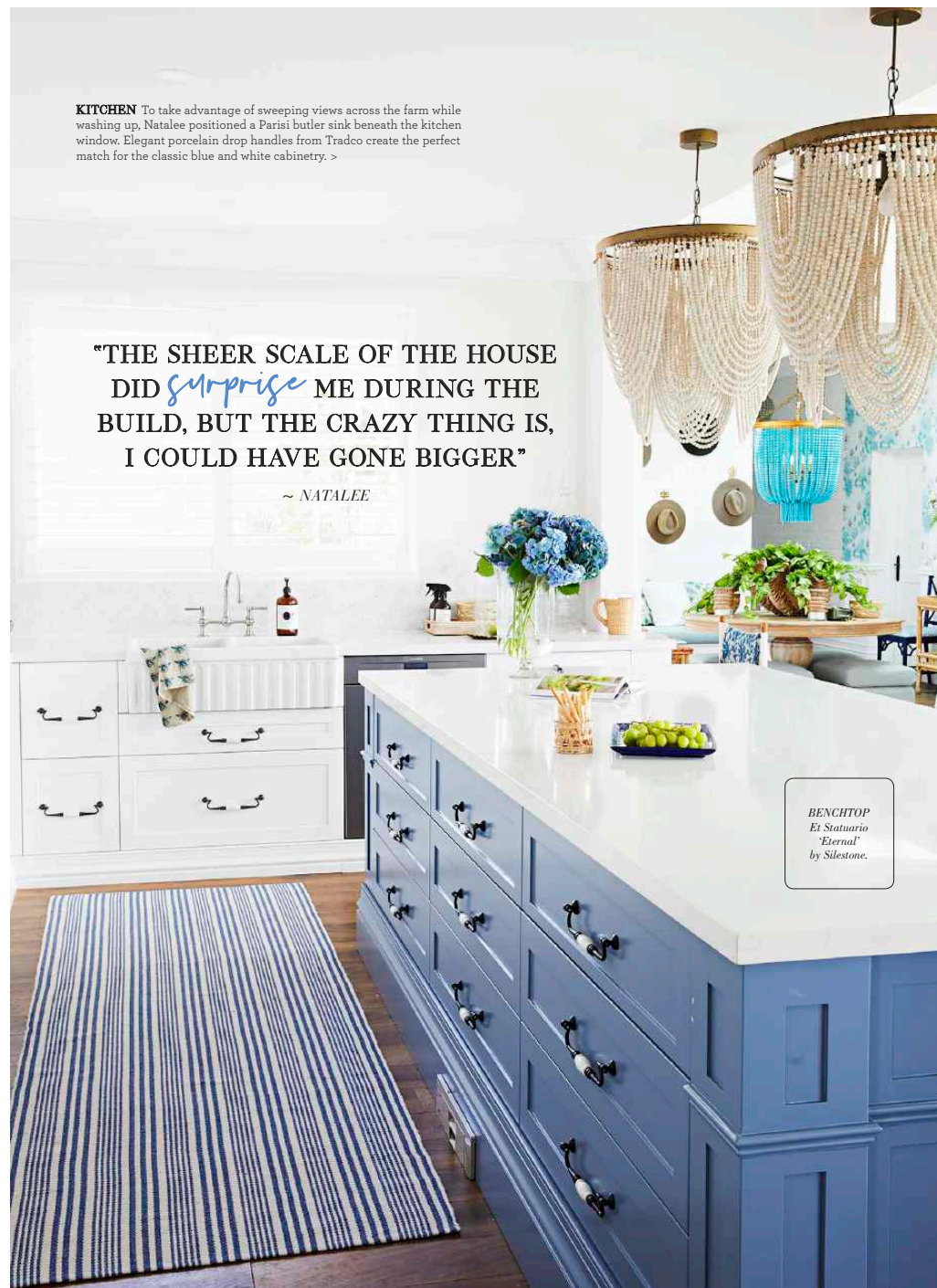
**DINING NOOK** When it's just Natalee, Mark and their two youngest daughters at home, they prefer to eat at the smaller more intimate dining nook off the kitchen. Indianah, pictured here with rescue cat Trixie, enjoys the sun-drenched spot. The round timber table is teamed with rattan chairs (both from Indah Island) and sofa from One World, topped with custom fabric cushions, while a striking Indah Island pendant brings individuality to the space. Luxaflex plantation shutters boost the Hamptons feel and help modulate the flow of light and air.



**KITCHEN** To take advantage of sweeping views across the farm while washing up, Natalee positioned a Parisi butler sink beneath the kitchen window. Elegant porcelain drop handles from Tradco create the perfect match for the classic blue and white cabinetry. >

"THE SHEER SCALE OF THE HOUSE  
DID *surprise* ME DURING THE  
BUILD, BUT THE CRAZY THING IS,  
I COULD HAVE GONE BIGGER"

~ NATALEE



BENCHTOP  
Et Statuario  
Eternal  
by Silestone.





"I HAD A *clear vision* FOR THE HOUSE AND AS SOON AS I PUT PEN TO PAPER THE DESIGN CAME TOGETHER QUICKLY AND SEAMLESSLY" ~ NATALEE



**ENTRANCE** Old meets new in the entrance area (top left) where the original walls of the brick cottage transition into the newer section of the house, defined by striking wallpaper from 3Beaches. For Natalee, choosing wallpaper is like selecting art. "There are so many beautiful designs, but I was particularly drawn to this one because it has proteas, which evoke an Australian feel," she says. "I think you just have to go with what you love." The aqua hues are picked up in a bespoke Indah Island chandelier and Chippendale chairs with custom upholstered seats.

**LIBRARY** Library shelving, complete with a ladder (top right), provides tiered surfaces to curate collections and create eclectic vignettes. It shows off treasured pieces picked up on the couple's travels, including their many trips to the East Coast of the US. For a cosy atmosphere, Natalee punctuated the space with dark timber pieces and custom fabrics for chairs and lampshades in caramel and duck egg tones, inspired by the surrounding landscape. "Outside we see fields of dry wheat and big blue skies, so I brought those colours into the interior," she explains.

**HALLWAY** Even transition zones such as the hall (left) are furnished as places to sit and take time out. Coastal blues in a Kerri Shipp artwork, the statement lamp from St John Lamps and a textural throw pair beautifully with British Colonial vintage-style cane furniture from Indah Island. "Hamptons isn't just one look, it's very layered and eclectic, but all the elements need to talk to one another," says the owner of her decorating.

"EVERY SPACE HAS A SLIGHTLY DIFFERENT LOOK, BUT EVERYWHERE I'VE COMBINED BEAUTY WITH A HOMELY, *relaxed* FEEL" ~ NATALEE

**LIVING AREA** There's no TV in the home, instead rooms such as the living area are designed as social spaces to gather and enjoy simple pleasures, including sitting by the gas fireplace from Fireplace Corner, or stretching out on a comfy Molmic chaise with a good book. Big, blowy hydrangeas are synonymous with the Hamptons and are also one of Natalee's favourite flowers, so the 'Club Hamptons' artwork by Felicia Aroney takes pride of place above the charming fireplace mantel from Schots Home Emporium. The striped Carnival Homewares rug adds classic formality, while the patterned fabrics provide interest and depth. >







“THERE’S JUST SOMETHING ABOUT BEING IN  
THE COUNTRY - THE AIR IS BETTER, YOU  
*sleep better* AND THE DAYS SEEM LONGER” ~ NATALEE

**MAIN BEDROOM** “I love soft colours with a crisp feel and always use duck egg blues in main bedrooms,” says Natalee of the serene palette in the bedroom (opposite). A delicate Peacock grasscloth wallpaper by 3Beaches in a custom colour creates a stunning backdrop for the luxurious upholstered bedhead by Indah Island. Textural layers, such as the custom cushions and a velvet throw from Her Shed, add to the feminine feel. A One World lamp paired with a St John lampshade provides perfect illumination for bedtime reading.

**ENSUITE** Natalee wanted to make the ensuite (top left & right) “really spectacular and special”. Herringbone Soho Carrara tiles from Beaumont Tiles provide a sophisticated foundation for the roomy bathtub from Schots Home Emporium with ‘New England’ Brodware taps, which is positioned by the verandah to soak up rural views. A pineapple chandelier and wall sconces from Lighting Collective add a tropical vibe, while the owner’s love of Chinoiserie motifs is reflected in stools, vases and a pair of intricate mirrors from Abide Interiors. “It’s probably more full-on than something I’d create for a client, but I just love it,” she enthuses.

**EBONEE’S BEDROOM** All of the cottage’s original bedrooms were revitalised and the couple’s eldest daughter Ebonee has claimed this one for weekend stays (right). The decorative Intrim mouldings and wainscoting by Perth Bespoke Carpentry in Dulux Lexicon pop against walls in Dulux Rottneest Island, evoking a heritage feel. Linens from Her Shed, Ralph Lauren fabric cushions and Kerri Shipp artworks from Driftwood Interiors create a harmonious palette of classic beige and blue. As with every space, the finishing touch is statement lighting – this stunning chandelier is a collectable that was sourced years ago from a vintage store. For similar, try One World. >





**VERANDAH** A popular place to congregate is the verandah, which wraps around the entire home. Keen to avoid the mammoth task of oiling timber, the homeowners opted for low-maintenance composite decking from New Tech Wood's Coastal range in Antique, which has a lovely rustic look and feel. Robust James Hardie Scyon Linea Boards, painted in Dulux Milton Moon, were chosen to provide that quintessential Hamptons style. In keeping with the resort-like feel, comfort is still key outside, where an array of plump wicker chairs and sofas are clustered for casual entertaining. "When all the bi-fold doors open up it really functions like an extension of our living area, so I continued the same beautiful blues and greens in the soft furnishings outside," explains Natalee, of custom scatter cushions and ottomans in 3Beach textiles by The Cushion Factory.

## DREAM IDEAS

Interior designer Kate Walker shares her advice on getting your home style just right

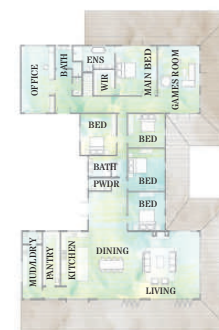
1. Your design style finds you rather than you searching for it. Your own design style comes from imagery that evokes emotion and that heartfelt response leads you toward a particular look.
2. It's important to take the architectural style of the property into account. The style you choose needs to work with your architecture rather than fight with it.
3. Look for the existing key elements in your home and decorate in a synergistic way to create a harmonious aesthetic.

ILLUSTRATION: KINZIDEASIGN.COM. ACTUAL PAINT COLOURS MAY VARY ON APPLICATION

**POOLSIDE** Pooches Alfie (pictured on a lounger) and Baxter have embraced rural living. "They love being by the pool just as much as we do," says Natalee. For an effortless green lawn, synthetic turf from Urban Turf envelops the Hamptons Blue Pool by Aqua Technics, which is defined by Horizon Light Grey tiles from Beaumont Tiles. A row of Osier Belle loungers creates a relaxing spot for pool parties and frilly 'Flamenco' umbrellas by Santa Barbara Designs, from 3Beaches, provide plenty of shade in the prettiest way possible.

**KITCHEN** Although it's a general rule of thumb not to use different metals in the one zone, Natalee says the size of the house meant she could get away with mixing it up. "I've used black handles throughout, polished nickel tapware and pendants with brass tones, but there's enough of everything to create balance and because it's on a big visual scale it all works together," she says.

## FLOOR PLAN



## CONTACTS

INTERIOR DESIGN & BUILD: Indah Island, 0413 370 006, indahisland.com.

KITCHEN: Colray Cabinets, (08) 9303 4300, colraycabinets.com.au.

LANDSCAPE DESIGN: Franklin Landscape Design, (02) 9598 1094, franklinld.com.