

## Cirque Umbrella







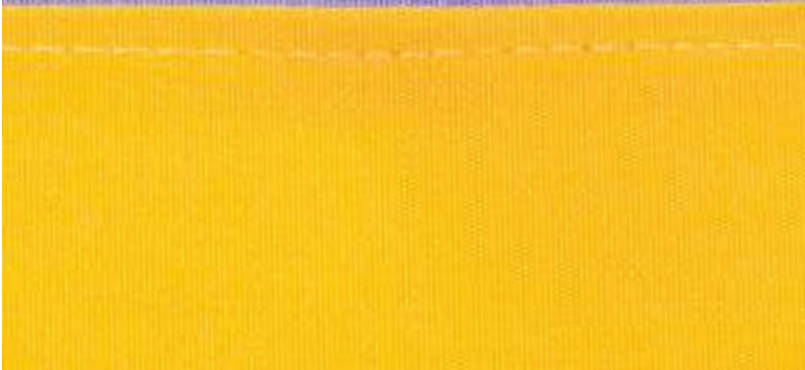
# CIRQUE UMBRELLA

The Cirque umbrella's canopy is created by seaming together two solid colors of awning fabric to create a custom stripe pattern.

The seamstresses at Santa Barbara Designs developed this unique umbrella in their Southern California workroom to address the need for more variation in customized canopy colors. Thousands of unique color block combinations are possible.

This innovative approach to canopy design allows you to create truly personalized color stories. Whether you prefer subtle tone-on-tone combinations or bold contrasting hues, the Cirque umbrella transforms color into pattern. The precision seaming technique ensures clean, professional lines that showcase both colors beautifully.



The Cirque umbrella incorporates a streamlined frame from the Riviera collection, paired with a choice of two distinctive valances - Keyhole or Scalloped. This thoughtful combination of custom color blocking and refined frame design creates endless possibilities for personalization. The result is fresh, clean and current, perfect for those who want to make a unique style statement.



## Cirque Umbrella



## Specifications

HEXAGON	STYLE NUMBER	SIZE	GROUND CLEARANCE	POLE DIAMETER	OVERALL HEIGHT
	RTH - 9 - CQ	9'0"	7'0"	2.0"	8'9"
	RTH - 10 - CQ	10'6"	7'0"	2.0"	8'9"
SQUARE					
	RTS - 8 - CQ	8'0"	7'0"	2.0"	8'9"
	RTS - 9 - CQ	9'0"	7'0"	2.0"	9'6"

## Hubs

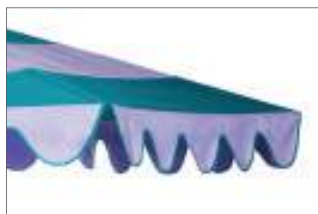


ALUMINUM HUB ANODIZED  
SILVER W/ STAINLESS FITTINGS

## Valances



KEYHOLE



SCALLOPED